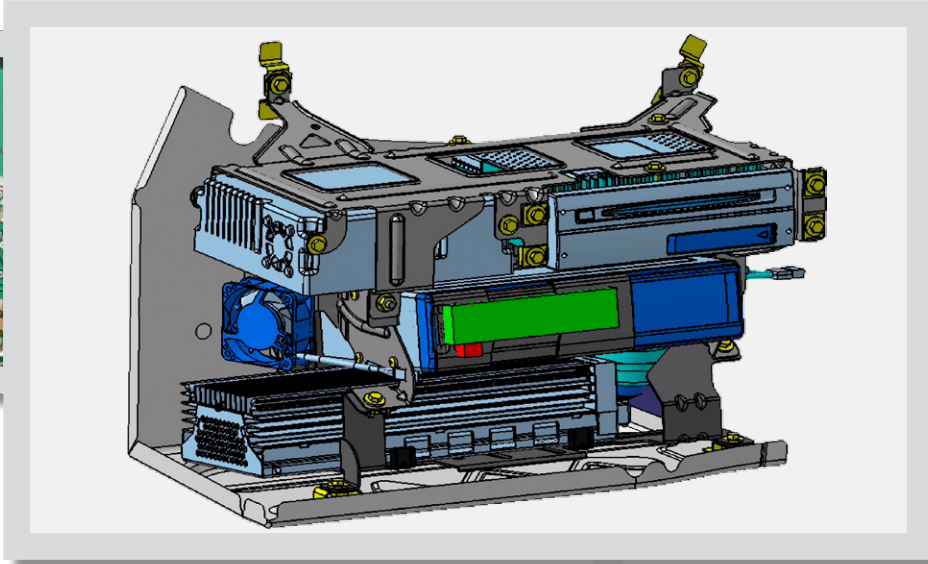
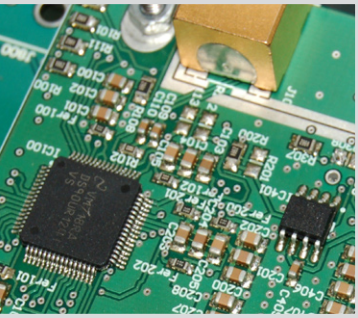




Information & Comfort

Tailwind for your visions



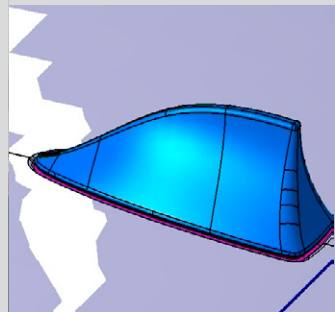
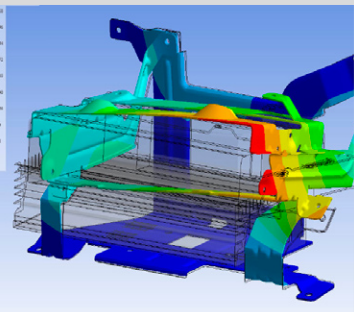
Range of Services

- Component development from concept through to production
- Development of control devices (hardware and software)
- Conceptual design and construction of mechanical components, such as design and construction of multi-functional switches or central operating units
- Drawing up and implementation of Infotainment solutions
- Simulation and calculation

Our Company

RUETZ TECHNOLOGIES GmbH has been a development service provider since 1982 with a main focus on engineering. More than 130 strongly committed members of staff from various areas of specialisation guarantee the production of rapid and interdisciplinary solutions for your state-of-the-art technologies. You can find us in Munich (company head office), Hamburg, Ingolstadt and Stuttgart

**RUETZ
TECHNOLOGIES**



Our Specific Services:

- ➔ Development of control units from the prototype stage through to manufacturing
- ➔ Patent research and establishing compliance with existing legal regulations
- ➔ Feasibility studies and concept development
- ➔ Package and tolerance investigation
- ➔ Constructive design with CATIA V5
- ➔ Thermal analyses and management
- ➔ Project coordination and control of suppliers
- ➔ Drawing up functional and design patterns
- ➔ Testing and acceptance
- ➔ Manufacturing support and further development

Your benefits:

- ➔ From concept to production – we'll take charge of everything
- ➔ Development and consulting
- ➔ Robust state- of-the-art innovations for sustainable products
- ➔ Engineering made in Germany
- ➔ Development services also on your premises
- ➔ All services and products certified according to the quality standard DIN EN ISO 9001:2008

RUETZ TECHNOLOGIES GmbH

Dipl.-Ing. Roland Schreiner, T +49 / 89 / 35610-270
Dipl.-Ing. Nicole Hirschmann, T +49 / 89 / 35610-182
Walter-Gropius-Straße 17, 80807 München
www.ruetz.de



**RUETZ
TECHNOLOGIES**