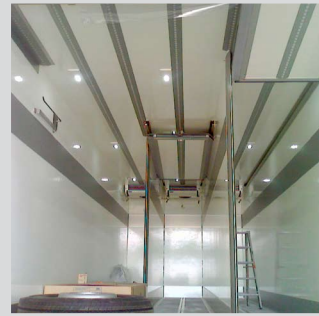




Downlight Compact

Innovative Interior Lighting For Utility Vehicles



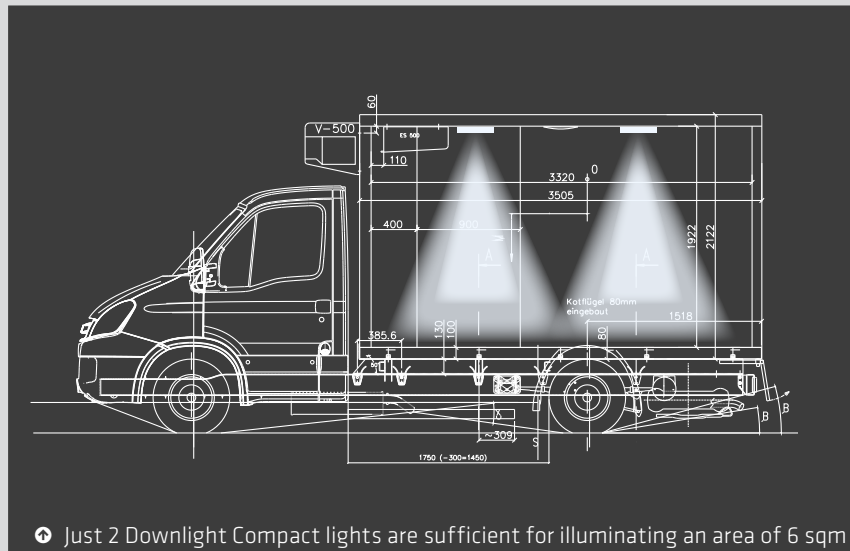
The Benefits

- Very low power consumption
- High safety class
- Temperature range from -40°C to +80°C
- Shock-resistant, water-proof and vapour stream-proof
- Minimal installation space required, installation height only 22 mm
- Mounting possible as a top-mounting or fitted assembly version
- Customer-specific version possible
- The top-mounting version can be used everywhere with an adapter plate
- Maintenance-free and long product life due to LED technology
- Low price

Das Produkt

Downlight Compact is a highly energy-saving LED lighting alternative above all for refrigerated transport vehicles. Heat emission is minimal thanks to high-tech LED technology. 6500 Kelvin-strong, soft, neutral white light illuminates the interior room of the box body and will even allow you to read small print. When using **Downlight Compact**, defective illuminants will be a thing of the past.

**RUETZ
TECHNOLOGIES**



Technical Features

- Voltage: 12-24 Volt
- Power consumption: 2.5 W
- Dimensions L x W x D: 195 x 70 x 22 mm, weight: 150 g
- Protection class: IP 6K9K when mounted
- Light colour 6500 Kelvin (neutral white)
- Radiation angle: 65° vertically
- Connector: AMP
- Material: Aluminium shell / acryl glass
- Temperature range: -40°C - +80°C

Areas of Usage

- Box bodies in commercial transport
- Utility vehicles and special vehicles
- Humid and refrigerated rooms
- Navy and shipping
- Interior and exterior architecture
- Long-distance coaches and city busses

RUETZ TECHNOLOGIES GmbH

Contact person: Michael Zapletal
Walter-Gropius-Straße 17, 80807 Munich, Germany
T: +49 / 89 / 35610-135
michael.zapletal@ruetz.de

Hamburg office

Contact person: Nico Höper
An der Strusbek 60-62, 22926 Ahrensburg, Germany
T: +49 / 4102 / 2000783, Mobil: +49 / 172 / 4132894
nico.hoepfer@ruetz.de
www.ruetz.de



**RUETZ
TECHNOLOGIES**